



Hairy Crab
Pilumnus hirtellus (~1 cm)



Risso's Crab
Xantho pilipes (~7 cm)

THREE XANTHID CRABS FOUND ON WEST HIGHLAND SHORES

James Merryweather



Montagu's Crab
Lophozozymus incisus (~10 cm)



Hairy Crab
Pilumnus hirtellus

Hairy carapace
Hairy legs (all)
Unequal 'pincers'
Adult 1 – 1.5 cm





Carapace: teeth obtuse, furrows shallow.
Legs: sparsely hairy except fringed merus (m).



M
A
L
E



Male abdomen: narrow, unfringed.

Montagu's Crab – page 1
Lophozozymus (Xantho) incisus



Female / Male



Carapace: teeth obtuse, furrows shallow.



F
E
M
A
L
E



Legs: sparsely hairy except fringed merus (m).



Female abdomen: broad, fringed.



No hairs under
carapace teeth

Male / Female

Montagu's Crab – page 2
Lophozozymus (Xantho) incisus



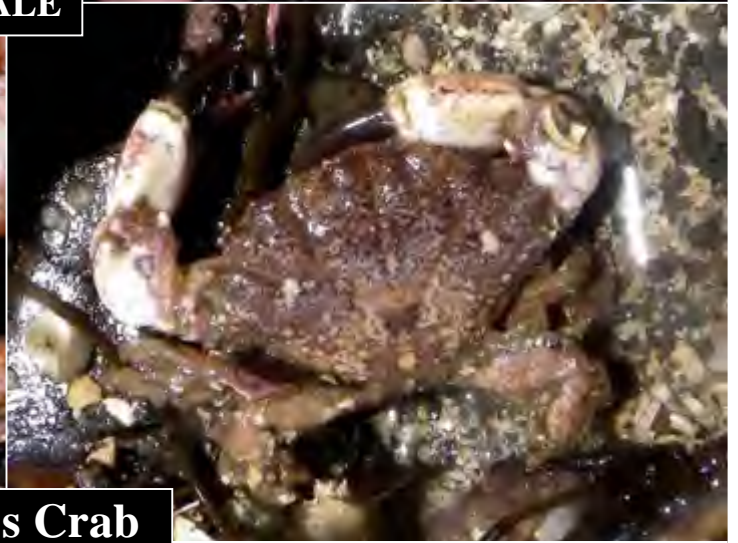
All leg segments hairy.



Male abdomen: narrow, unfringed.



Carapace: deeply furrowed between acute, thorn-like teeth.



MALE

Risso's Crab
Xantho pilipes



FEMALE

Female abdomen: broad, fringed.



Hairy under carapace teeth

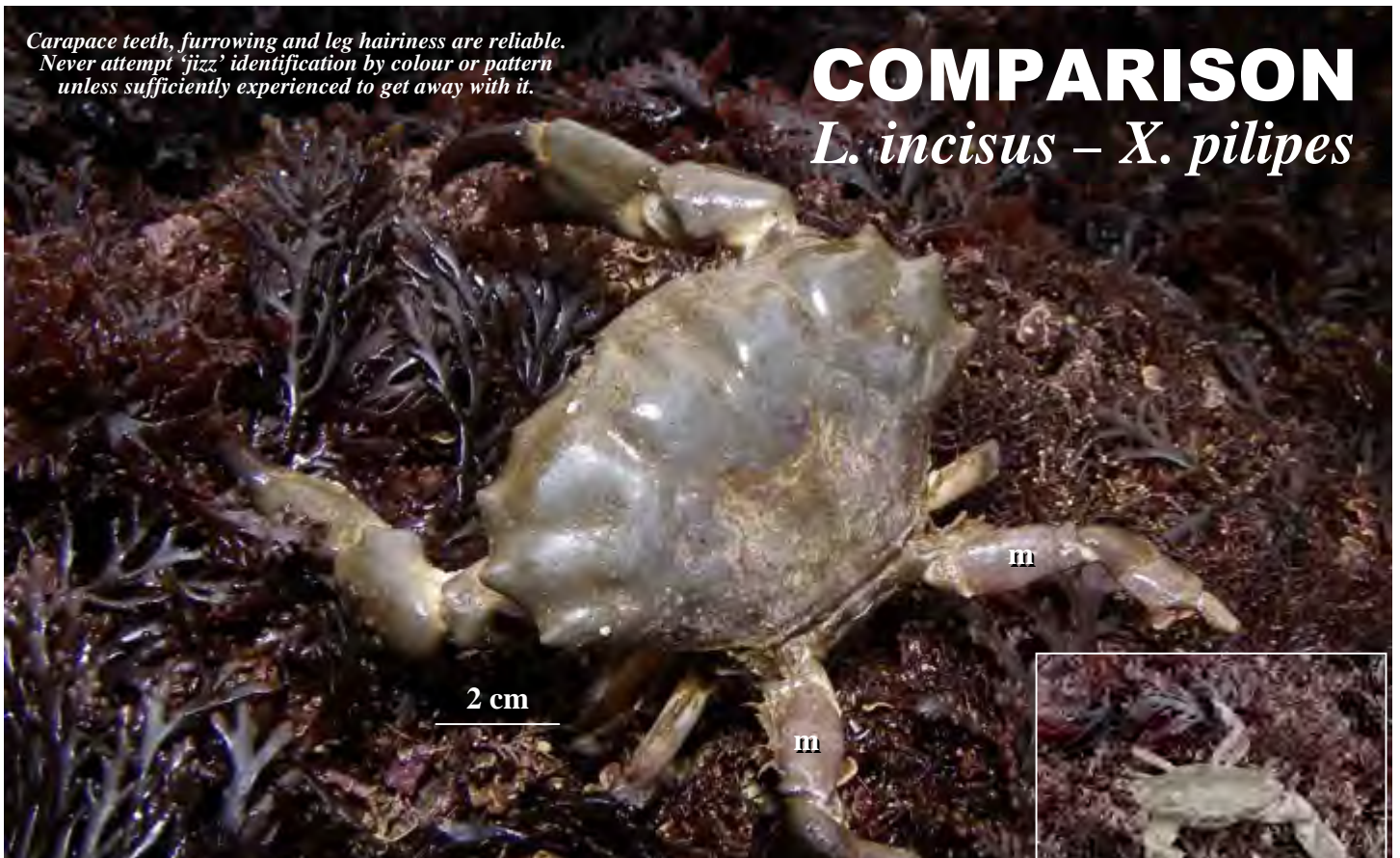


All leg segments hairy

Carapace teeth, furrowing and leg hairiness are reliable.
Never attempt 'jizz' identification by colour or pattern
unless sufficiently experienced to get away with it.

COMPARISON

L. incisus – *X. pilipes*



Lophozozymus (Xantho) incisus Obtuse carapace teeth, ± glabrous beneath. Carapace itself has shallow, broad furrows (f) between the teeth. Walking legs sparsely hairy except merus (m) which is fringed. Carapace often yellowish-brown, but can be dark brown (sometimes with orange blotches), grey, grey-mottled, purple etc.



L. incisus

X. pilipes

Relative sizes



Xantho pilipes Acute, thorn-like carapace teeth, ± hairy beneath. Carapace itself has deep, narrow furrows (f) between the teeth. Walking legs densely hairy on all segments, hairs matted in life. Carapace colour highly variable, often minutely punctate.